



**Government of India
Ministry of Earth Sciences
India Meteorological Department**



Press Release

Date: 01st June, 2025

Time of Issue: 1400 hours IST

Subject: i) Heavy to very heavy rainfall likely to continue over Northeastern states till 03rd June and Sub-Himalayan West Bengal till 02nd June with extremely heavy rainfall over Northeast India on 01st June.

ii) Rainfall along with thunderstorm & gusty winds likely over northwest India during next 3-4 day with peak activities on 2nd and 3rd June.

Southwest Monsoon: (Annexure I):

- ❖ The Northern Limit of Monsoon continues to pass through 17.0°N/55°E, 17.5°N/60°E, 18°N/65°E, 18.5°N/70°E, Mumbai, Ahilyanagar, Adilabad, Bhawanipatna, Puri, Sandhead Island, 23.5°N/89.5°E, Balurghat, 30°N/85°E.

Realised weather during past 24 hours till 0830 hours IST of today, the 01st June, 2025 (Annexure II):

- ❖ **Heavy to very heavy rainfall** at some places with **extremely heavy falls** recorded at isolated places over Assam, Meghalaya with **Isolated exceptionally heavy rainfall over Assam (Silchar 42 cm).**
- ❖ **Heavy to very heavy rainfall** recorded at isolated places over Tripura and Arunachal Pradesh; **Heavy rainfall** at isolated places over Manipur, Mizoram, Kerala, Odisha and Sub-Himalayan West Bengal.
- ❖ **Thunderstorm accompanied with Squally/Gusty winds** with speed 70-90 kmph at isolated places over Haryana and Punjab; with speed 40-70 kmph at isolated places over Himachal Pradesh, Saurashtra & Kutch, Jharkhand, Madhya Maharashtra, East Uttar Pradesh, Andaman & Nicobar Islands, Bihar, West Uttar Pradesh, Konkan, Marathawada, Assam & Meghalaya, Gangetic West Bengal, West Madhya Pradesh, Nagaland, Manipur, Mizoram & Tripura.
- ❖ **Hailstorm** observed at isolated places over Jammu & Kashmir, Punjab (Patiala), Haryana (Bhiwani).

For more details of realised weather, kindly refer **Annexure II,**

Detailed observations of Maximum Temperature during past 24 hours till 0830 hours IST of today are appended in **Annexure III.**

i. Weather Systems, Forecast and Warnings (refer to Annexure IV & V):

- ❖ The Western disturbance as cyclonic circulation over north Pakistan & adjoining Jammu and north Punjab in lower tropospheric levels with a trough aloft in middle & upper tropospheric levels with its axis at 5.8 km above mean sea level roughly along Long. 74°E to the north of Lat. 32°N.
- ❖ The upper air cyclonic circulation over central Pakistan in lower tropospheric levels.
- ❖ an upper air cyclonic circulation over Haryana and the trough from central Pakistan to the above cyclonic circulation over Haryana across north Rajasthan in lower tropospheric levels.
- ❖ An upper air cyclonic circulation over northeast Assam in lower tropospheric levels.
- ❖ A trough at mean sea level runs from central parts of East Uttar Pradesh to Arunachal Pradesh across central parts of Bihar, Sub-Himalayan West Bengal, central parts of Assam.
- ❖ A north-south trough runs roughly along Long. 90°E to the north of Lat. 20°N in lower tropospheric levels.
- ❖ Under the influence of these systems, the following weather is likely:

Northeast India:

- ✓ Light/moderate rainfall at most/many places likely to continue over northeast India during next 7 days with heavy rainfall during next 5 days
- ✓ Isolated **heavy to very heavy rainfall** very likely over Arunachal Pradesh on 01st, Assam & Meghalaya during 01st-03rd, Manipur, Mizoram & Tripura on 01st & 02nd with **isolated extremely heavy rainfall** also likely over Assam & Meghalaya, Manipur, Mizoram & Tripura on 01st June.

East & Central India:

- ✓ Light/moderate rainfall at most/many places likely to continue over Sub-Himalayan West Bengal & Sikkim during next 7 days **with isolated heavy falls** on 1st and 02nd June and **very heavy falls on 1st June**.
- ✓ **Isolated to scattered** light/moderate rainfall accompanied with **thunderstorm, lightning & gusty winds speed reaching 40-50 kmph** likely over Madhya Pradesh, Vidarbha, Chhattisgarh, Bihar, Odisha during 01st-04th and over Gangetic West Bengal, Jharkhand on 01st June.

Northwest India:

- ✓ Light/moderate rainfall at many/some places accompanied with **thunderstorm, lightning & gusty winds speed reaching 40-50 kmph** likely over Jammu-Kashmir-Ladakh-Gilgit-Baltistan-Muzaffarabad, Himachal Pradesh, Uttarakhand, Punjab, Haryana Chandigarh & Delhi; light/moderate rainfall at some/isolated places over Uttar Pradesh, Rajasthan during 01st-05th June.
- ✓ **Thundersquall wind speed reaching 50-60 kmph gusting to 70 kmph** likely over Jammu-Kashmir on 02nd & 03rd, Himachal Pradesh on 03rd & 04th, West Uttar Pradesh on 03rd, East Rajasthan on 02nd & 03rd June.
- ✓ **Isolated heavy rainfall** also likely over Uttarakhand during 01st-04th June and over Punjab, Haryana on 3rd June.
- ✓ **Dust storm** also very likely at isolated places over West Rajasthan during 02nd-04th June.

West India:

- ✓ Light/moderate rainfall at many places likely over Konkan & Goa with **isolated heavy rainfall** likely over Goa on 01st June.

South Peninsular India:

- ✓ Light/moderate rainfall at many places with **thunderstorm, lightning & gusty winds speed reaching 40-50 kmph** over Kerala & Mahe, Coastal Karnataka during 01st-04th June.
- ✓ Light/moderate rainfall at some places accompanied with **thunderstorm, lightning & gusty winds speed reaching 40-50 kmph** over Coastal Andhra Pradesh, Rayalaseema, Telangana during 01st-04th June; Interior Karnataka on 04th & 05th June.
- ✓ **Isolated heavy rainfall** also likely over Kerala & Mahe during 01st-04th June, Coastal Karnataka on 01st June.

Maximum Temperature Forecast:

- ❖ No significant change in maximum temperatures likely over Northwest India during next 2 days; gradual fall by 3-4°C during subsequent next 3 days.
- ❖ Gradual rise by 2-4°C in maximum temperatures over East India during next 4 days and no large change thereafter.
- ❖ No significant change in maximum temperatures likely over rest parts of the country.

Hot & Humid warnings:

- ❖ **Hot & humid weather** is likely to prevail over Odisha on 04th & 05th June.

FISHERMEN WARNINGS (Graphics in Annexure VI)

(A) **Fishermen are advised not to venture over** south and many parts of central Arabian Sea, over Lakshadweep, Maldives, Comorin areas from 0530 IST of 01st June to 0530 IST of 02nd June; over Gulf of Mannar from 1130 IST of 01st June to 0530 IST of 06th June; and along & off Kerala, Karnataka coasts from 1130 IST of 01st June to 0530 IST of 02nd June; along and off Somalia coasts and adjoining sea areas from 1130 IST of 01st June to 0530 IST of 06th June; along and off Gujarat coast from 1130 IST of 01st June to 0530 IST of 02nd June; off north Gujarat coast and some parts of northeast Arabian Sea on 02nd June; over southern parts of north Arabian Sea on 03rd and 4th June.

(B) Fishermen are advised not to venture off Tamil Nadu, Andhra Pradesh coasts & most parts of Bay of Bengal from 1130 IST of 01st June to 0530 IST of 02nd June; most parts of central Bay of Bengal and adjoining parts of south and north Bay of Bengal from 0530 IST of 02nd June to 0530 IST of 04th June; over most parts of central and adjoining parts of north Bay of Bengal on 04th June; over most parts of westcentral and adjoining parts of eastcentral Bay of Bengal on 05th June.

iv. Weather conditions and forecast over Delhi/NCR during 01st June to 04th June, 2025 (Annexure VII)

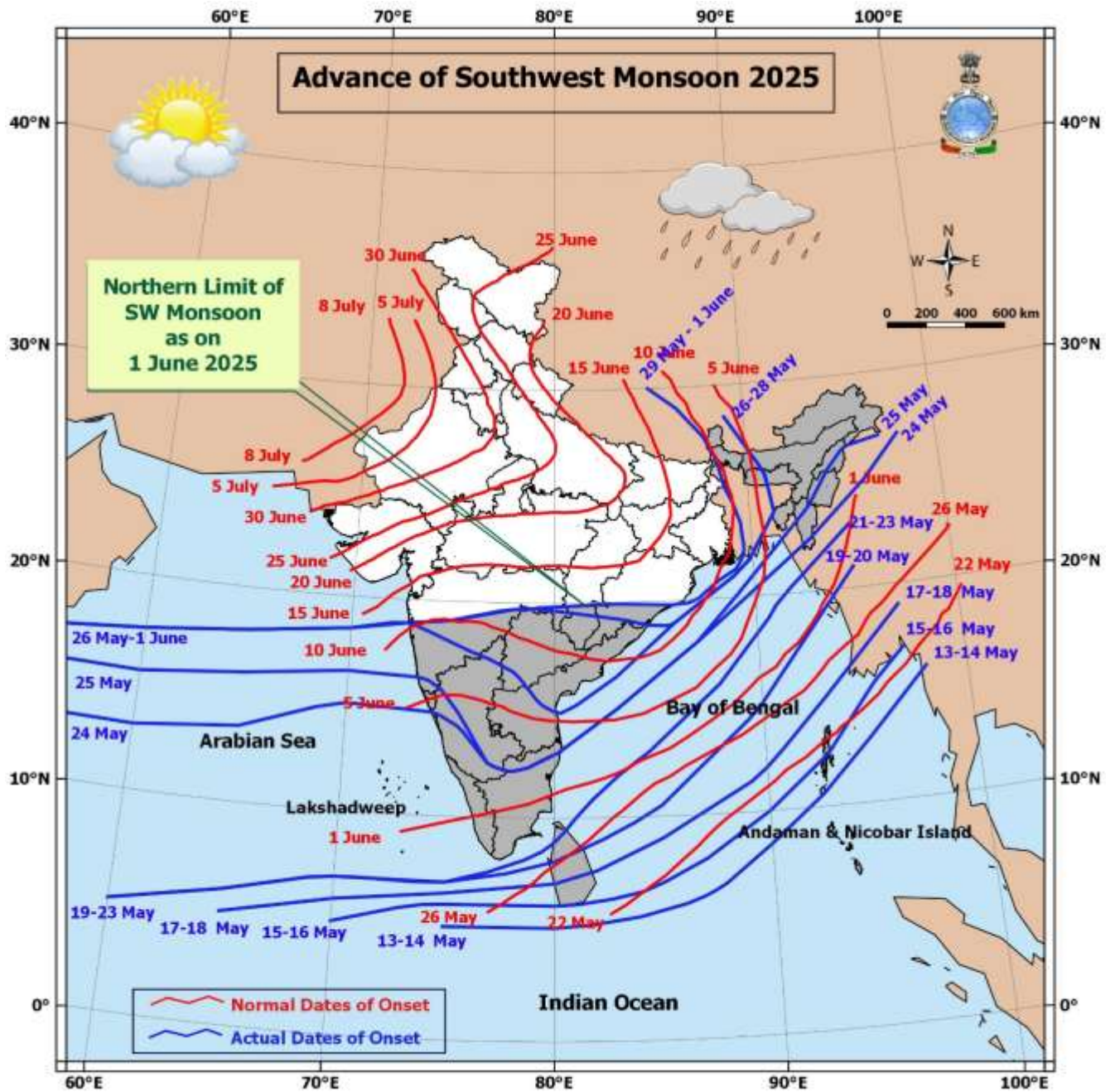
For more details, kindly refer National Weather Bulletin:

https://mausam.imd.gov.in/responsive/all_india_forecast_bulletin.php

For District wise warnings refer: <https://mausam.imd.gov.in/responsive/districtWiseWarningGIS.php>

For Depression Bulletins refer:

https://rsmcnewdelhi.imd.gov.in/uploads/archive/1/1_fba0b7_02.National%20Bulletin%20No%2002-24May2025_0830IST.pdf



Significant weather reported during past 24 hours till 0830 hours IST of today:**Rainfall recorded (in cm) reported during past 24 hours till 0830 hours IST of today:**

- ❖ **Assam:** Silchar (dist Cachher) 42, Karimganj (dist Karimganj) 35, AP Ghat (dist Cachher) 32, Algapur Circle (dist Hailakandi) 30, Matijuri (dist Hailakandi) 30, Panchgram AEGCL (dist Hailakandi) 27, Lakhipur (dist Cachher) 26, B P Ghat (dist Karimganj) 24, Amraghat (dist Cachher) 23, Haflong (dist Dima Hasao) 18, Lakhipur (Arg) (dist Cachher) 12, Dholai (dist Cachher) 10, Kokrajhar (dist Kokrajhar) 9, KVK Morigaon (dist Morigaon) 8, Panbari (dist Chirang) 7, Lakhimpur (dist Lakhimpur) 7, Aie N H Xing (dist Bongaigaon) 7, Chandubi (dist Kamrup R) 7,
- ❖ **Meghalaya:** Rattachera (dist East Jaintia Hills) 24, Mawkyrwat (dist South West Khasi Hills) 16, Khliehriat (ARG) (dist East Jaintia Hills) 14, Sohra (dist East Khasi Hills) 12, Mawkyrwat (dist South West Khasi Hills) 12, Pynursla (dist East Khasi Hills) 12, Khliehriat (dist East Jaintia Hills) 12, Mineng(ARG) (dist South Garo Hills) 11, Mynram (dist East Khasi Hills) 10, Mynram (dist East Khasi Hills) 10, Sohra Rkm (dist East Khasi Hills) 10, Mawphlang (dist East Khasi Hills) 9, Shella (dist East Khasi Hills) 9, Khata Laitkroh(ARG) (dist East Garo Hills) 8, Meele (dist East Khasi Hills) 7
- ❖ **Tripura:** Budhjongnagar Arg (dist West Tripura) 20, Kailashahar Aero (dist Unakoti) 19, Arundhutinagar (dist West Tripura) 19, Kailashahar (dist Unakoti) 18, Jirania Arg (dist West Tripura) 17, Khowai_ (dist Khowai) 16, Khowai (dist Khowai) 15, Kadamtala Arg (dist North Tripura) 14, Dm Office Arg (dist West Tripura) 14, Lembuchhera (dist West Tripura) 13, Sabroom (dist South Tripura) 12, Kamalpur (dist Dhalai) 11, Agartala Aero (dist West Tripura) 11, Bagafa (dist South Tripura) 11, Dharmanagar/ Panisagar (dist North Tripura) 10, Met Agartala (dist West Tripura) 10, Kvk South (dist South Tripura) 10, Belonia (dist South Tripura) 9, Ashapara (dist North Tripura) 8
- ❖ **Arunachal Pradesh:** Kibitoo_circle (dist Anjaw) 17, Hayuliang_circle (dist Anjaw) 15, Kalaktang (dist West Kameng) 10, M.o. pasighat (dist East Siang) 7,
- ❖ **Manipur:** Chotabekra (dist Imphal West) 11, Senapati (dist Senapati) 10, Khoupum (dist Noney) 9, Lamsang (ARG) (dist Imphal West) 8,
- ❖ **Sub-Himalayan West Bengal:** Bhutanghat (dist Alipurduar) 11, Newlands Tea Garden (dist Alipurduar) 9, Buxaduar (dist Alipurduar) 9, Kumargram Tea Estate (dist Alipurduar) 9, Sankos Tea Estate (dist Alipurduar) 9, Alipurduar (pto) (dist Alipurduar) 8, Toorsa Tea Garden (dist Alipurduar) 8, Nagarkata (dist Jalpaiguri) 8, Chengmari/diana (dist Jalpaiguri) 7, Indong T.e. (dist Jalpaiguri) 7,
- ❖ **Mizoram:** Aizawl (dist Aizawl) 10, Kolasib AGRI (dist Kolasib) 10, Lengpui (dist Aizawl) 7,
- ❖ **Odisha:** Biridi (Jagatsinghpur) 9,
- ❖ **Kerala:** Kayamkulam (dist Alapuzha) 7, Mancompu (dist Alapuzha) 6, Cherthala (dist Alapuzha) 6,

Realised Gusty Winds (KMPH) During Past 24hours Ending At 0300 UTC Of Today I.E. 01.06.2025:

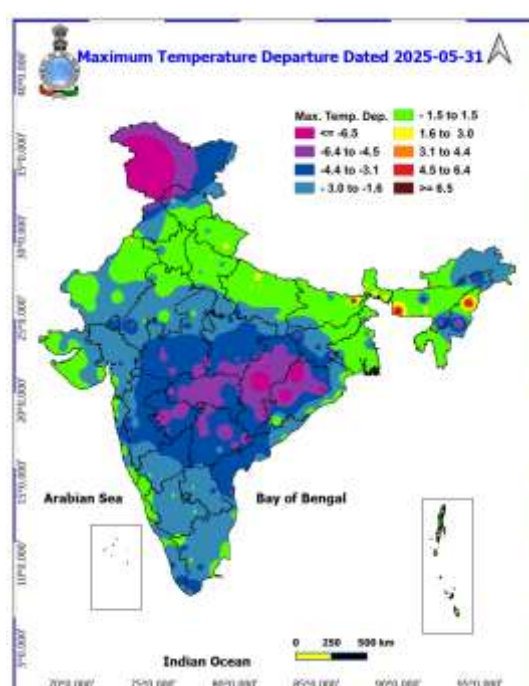
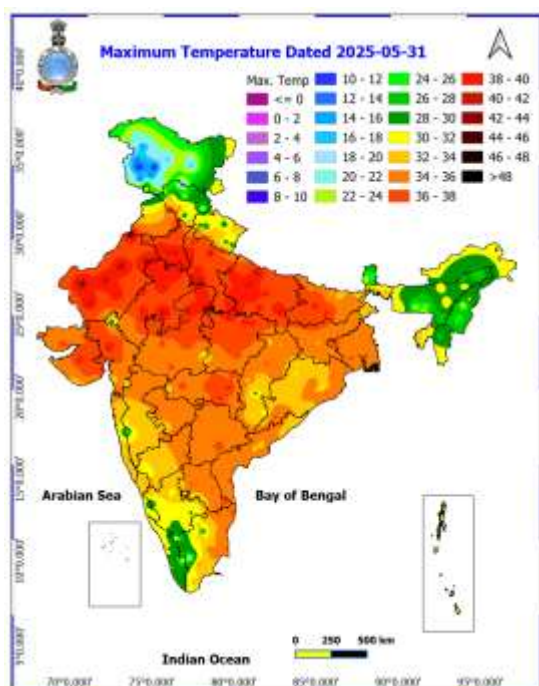
- ❖ **Haryana:** BHIWANI=89, PANDU_PINDARA(JIND)=64,
- ❖ **Punjab:** HOSIYARPUR(HSP)=83, MOHALI=74, SRI_ANANDAPUR_SAHIB(RPN)=72,
- ❖ **Himachal Pradesh:** Berthin(61kmph),Neri & Bilaspur(56kmph),Seobagh(50kmph),Dhaura Kuan & Kukumseri(48kmph),Tabo(46kmph),
- ❖ **Saurashtra & Kutch:** Kutch (Kandla) : 57 Kmph.
- ❖ **Jharkhand:** Bokaro (57); Deoghar, Barhi, Diyakel (37); Simdega (35), Dhanbadgiridih, Netarhat (33); Garhwa, Ranchi (30),
- ❖ **Madhya Maharashtra:** Nashik (Kalwan) - 54 Kmph, Nashik (Vilholi) - 52 Kmph, Shahada(NANDURBAR) (50 Kmph), Rajgurunagar(PUNE) (46 Kmph), Satara (BGRL_Karad) - 44 Kmph,,
- ❖ **East Uttar Pradesh:** RAYAGRAJ(IAF)-54, FATEHPUR-50, FURSATGANJ-50, MIRZAPUR-44,,
- ❖ **Andaman & Nicobar Islands:** Sri Vijayapuram (54); Sri Vijayapuram - 43; Swarajdeep (41); Ferrargunj (33),
- ❖ **Bihar:** Agwanpur (54); Sipaya (52); Pusa (48); Sukhet, Ziradei (46); Saraiya (44); Madhepura (39); East Champaran, IIT Patna (35); Katihar (33); Aurangabad, Bhojpur, Supaul (31); Darbhanga, Patna (30),
- ❖ **West Uttar Pradesh:** Muzaffarnagar-50, Bulandshhar-46, Mainpuri-43, Firozabad-41, Hamirpur-41, Jalaun-41,Bulandshhar_Kvk-39, Agra(laf)-37,
- ❖ **Konkan:** Raigad (IIG_Alibag) - 48 Kmph, Palghar (Palghar_) - 43 Kmph,
- ❖ **Marathwada:** Aurangabad (Aurangabad) - 48 Kmph,Gujarat Region: Bharuch (Maktampura AFMU-): 50 Kmph,
- ❖ **Assam & Meghalaya:** Mynram (EKH) : 46,Nongstoin(WKH):43,MAWKYRWAT(SWKH)39, Shillong(EKH):37,
- ❖ **Gangetic West Bengal:** Canning (46); Raidighi (39); Agarpara (37); Kalyani, Diamond Harbour (35); Dum Dum, Gangasagar (33); Digba (31),
- ❖ **West Madhya Pradesh:** (Bhopal = 46 KMPH),
- ❖ **Nagaland, Manipur, Mizoram & Tripura:** Thonoknyu =40 , Wokha =38,CHAMPAI=45,AGARTALA =49, KAMALPUR =36, KHOWAI =36 SILCHAR_JNS_COLLEGE=45,DHEKIAJULI_AEGCL=32,

Temperature observations during past 24 hours till 0830 hours IST of today:

- ❖ Yesterday, **Maximum Temperatures** were in the **range of 40-44°C** in many parts of West Rajasthan; in some parts of Haryana, East Rajasthan, East Uttar Pradesh; in isolated parts of West Uttar Pradesh; in the **range 35-40°C** in most parts of Madhya Pradesh; in many parts of Punjab, Delhi, Bihar, Gujarat state, Vidarbha; in some parts of Gangetic West Bengal, Jharkhand, Coastal Andhra Pradesh & Yanam, Telangana; in isolated parts of Uttarakhand, Odisha, Rayalaseema, Madhya Maharashtra, Tamil Nadu, Puducherry & Karaikal and they were less than 35°C elsewhere over remaining parts of the country. **Yesterday, the highest maximum temperature of 44.2°C is reported at Sri Ganganagar (West Rajasthan).**
- ❖ Yesterday, **Maximum Temperatures** are **markedly above normal (> 5.1°C)** at isolated places over West Uttar Pradesh and Punjab. **appreciably above normal (3.1°C to 5.0°C)** at isolated places over Sub Himalayan West Bengal & Sikkim, East Uttar Pradesh, Himachal Pradesh and East Madhya Pradesh. **above normal (1.6°C to 3.0°C)** at few places over Uttarakhand; at isolated places over Andaman & Nicobar Islands, Assam & Meghalaya, Gangetic West Bengal, Bihar, West Rajasthan and Tamil Nadu, Puducherry & Karaikal. **near normal (-1.5°C to 1.5°C)** at many places over Nagaland, Manipur, Mizoram & Tripura, Haryana-Chandigarh-Delhi and Konkan & Goa; at most places over Saurashtra & Kutch, Coastal Karnataka and Lakshadweep; at few places over Odisha, East Rajasthan and Gujarat Region; at isolated places over West Madhya Pradesh, Madhya Maharashtra, Coastal Andhra Pradesh & Yanam, Rayalaseema, North Interior Karnataka, South Interior Karnataka and Kerala & Mahe.

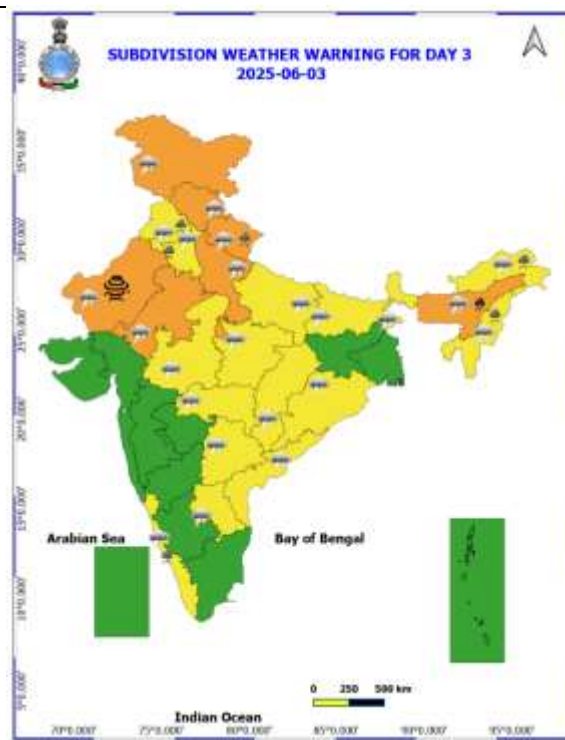
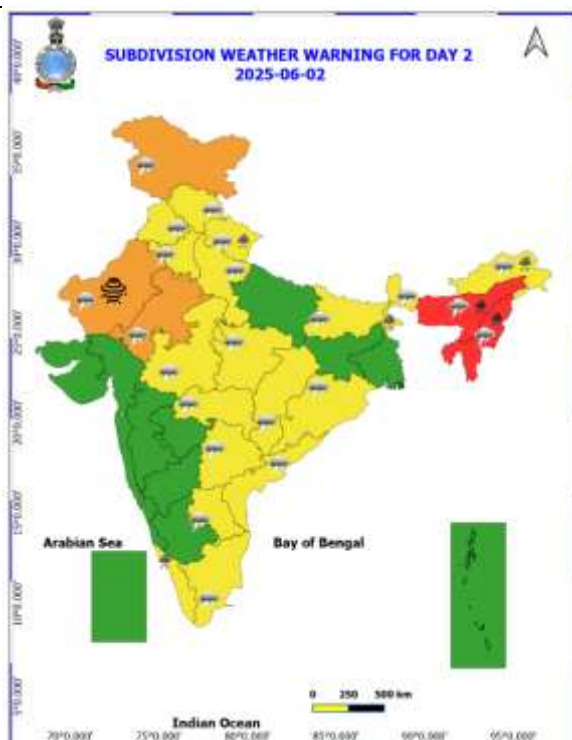
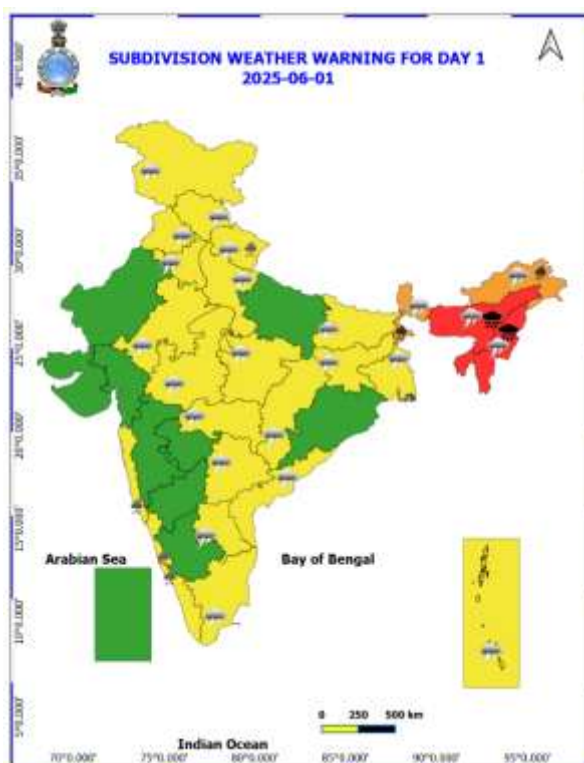
Fig.1: Maximum Temperatures

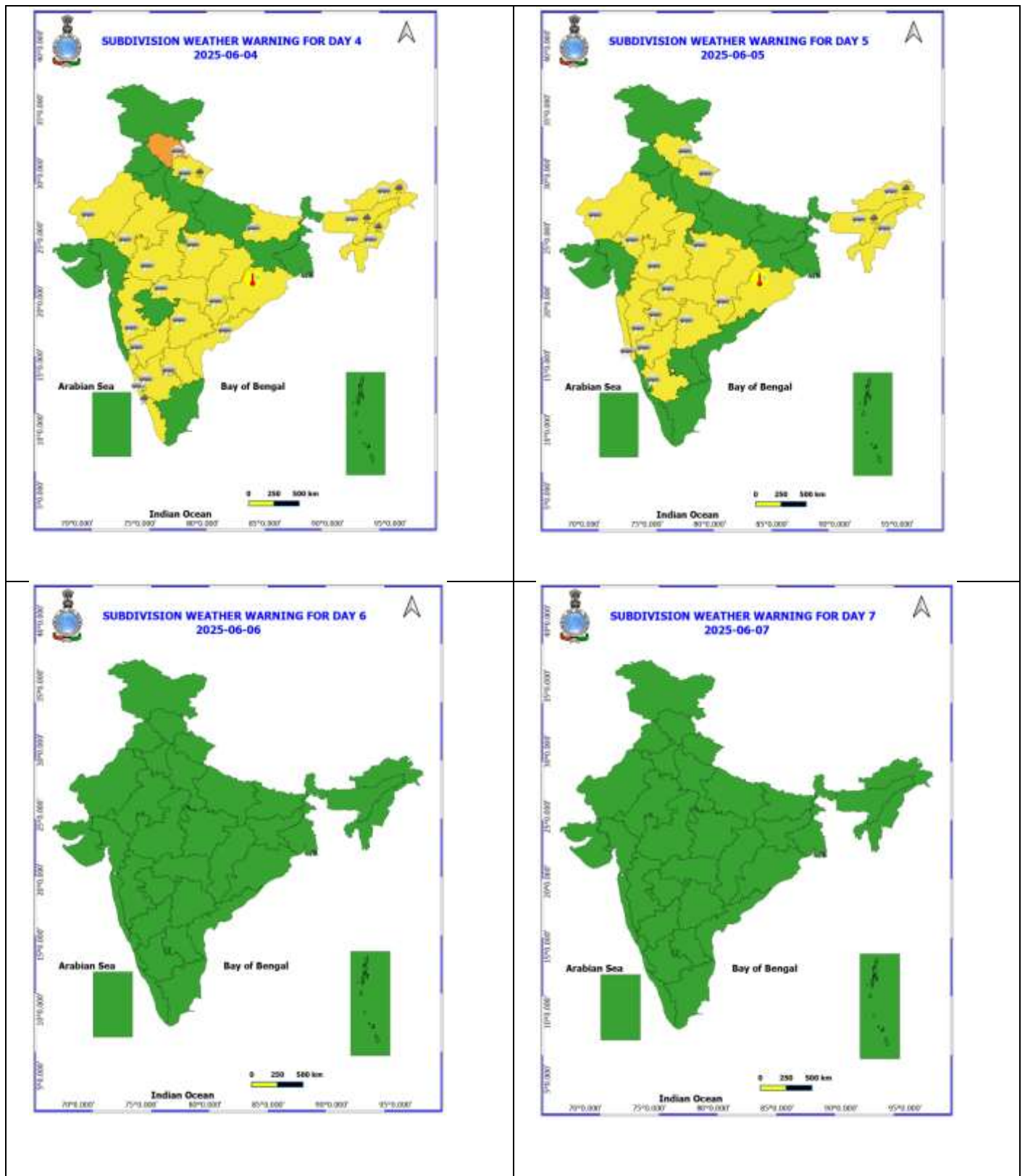
Fig.2: Departure of Maximum Temperatures



7 Days Rainfall Forecast								
S. No.	Subdivision	01-Jun	02-Jun	03-Jun	04-Jun	05-Jun	06-Jun	07-Jun
		Day 1	Day 2	Day 3	Day 4	Day 5	Day 6	Day 7
1	ANDAMAN & NICOBAR ISLANDS	WS	WS	FWS	FWS	WS	WS	WS
2	ARUNACHAL PRADESH	WS	WS	WS	FWS	FWS	FWS	FWS
3	ASSAM & MEGHALAYA	WS	WS	WS	WS	FWS	FWS	FWS
4	NAGALAND, MANIPUR, MIZORAM & TRIPURA	WS	WS	WS	FWS	FWS	SCT	SCT
5	SUB-HIMALAYAN WEST BENGAL & SIKKIM	WS	WS	FWS	FWS	FWS	FWS	FWS
6	GANGETIC WEST BENGAL	SCT	ISOL	ISOL	SCT	SCT	ISOL	ISOL
7	ODISHA	ISOL	ISOL	ISOL	ISOL	ISOL	ISOL	ISOL
8	JHARKHAND	SCT	ISOL	ISOL	ISOL	ISOL	DRY	DRY
9	BIHAR	ISOL	ISOL	ISOL	ISOL	ISOL	DRY	DRY
10	EAST UTTAR PRADESH	ISOL	ISOL	ISOL	ISOL	ISOL	DRY	DRY
11	WEST UTTAR PRADESH	SCT	SCT	SCT	ISOL	ISOL	DRY	DRY
12	UTTARAKHAND	FWS	FWS	FWS	SCT	SCT	ISOL	ISOL
13	HARYANA CHANDIGARH & DELHI	SCT	SCT	FWS	DRY	DRY	DRY	DRY
14	PUNJAB	SCT	SCT	SCT	DRY	DRY	DRY	DRY
15	HIMACHAL PRADESH	SCT	SCT	FWS	FWS	SCT	ISOL	ISOL
16	JAMMU & KASHMIR AND LADAKH	SCT	SCT	FWS	SCT	ISOL	DRY	DRY
17	WEST RAJASTHAN	ISOL	ISOL	ISOL	ISOL	ISOL	ISOL	ISOL
18	EAST RAJASTHAN	ISOL	ISOL	ISOL	ISOL	ISOL	ISOL	ISOL
19	WEST MADHYA PRADESH	ISOL	ISOL	SCT	SCT	ISOL	ISOL	ISOL
20	EAST MADHYA PRADESH	ISOL	ISOL	ISOL	ISOL	ISOL	ISOL	ISOL
21	GUJARAT REGION	ISOL	ISOL	ISOL	ISOL	ISOL	ISOL	ISOL
22	SAURASHTRA & KUTCH	ISOL	ISOL	ISOL	ISOL	ISOL	ISOL	ISOL
23	KONKAN & GOA	FWS	SCT	FWS	ISOL	SCT	ISOL	ISOL
24	MADHYA MAHARASHTRA	ISOL	ISOL	ISOL	ISOL	ISOL	ISOL	ISOL
25	MARATHAWADA	ISOL	ISOL	ISOL	ISOL	ISOL	ISOL	ISOL
26	VIDARBHA	ISOL	ISOL	ISOL	ISOL	ISOL	ISOL	ISOL
27	CHHATTISGARH	ISOL	ISOL	ISOL	ISOL	ISOL	ISOL	ISOL
28	COASTAL ANDHRA PRADESH & YANAM	ISOL	ISOL	ISOL	ISOL	ISOL	ISOL	ISOL
29	TELANGANA	ISOL	ISOL	ISOL	ISOL	ISOL	ISOL	ISOL
30	RAYALASEEMA	ISOL	ISOL	ISOL	ISOL	ISOL	ISOL	ISOL
31	TAMILNADU PUDUCHERRY & KARAIKAL	ISOL	ISOL	ISOL	ISOL	ISOL	ISOL	ISOL
32	COASTAL KARNATAKA	WS	WS	WS	FWS	SCT	SCT	SCT
33	NORTH INTERIOR KARNATAKA	ISOL	ISOL	ISOL	ISOL	ISOL	ISOL	ISOL
34	SOUTH INTERIOR KARNATAKA	ISOL	ISOL	ISOL	ISOL	ISOL	ISOL	ISOL
35	KERALA & MAHE	FWS	FWS	FWS	FWS	SCT	SCT	SCT
36	LAKSHADWEEP	FWS	FWS	FWS	FWS	SCT	SCT	SCT

- As the lead period increases forecast accuracy decreases.





- Action may be taken based on ORANGE AND REDCOLOUR warnings.
- Vulnerable regions likely urban and hilly areas action may be initiated for heavy rainfall warning.
- As the lead period increases forecast accuracy decreases.

Detailed districtwise MultiHazard weather warning for next five days available at <https://mausam.imd.gov.in/responsive/districtWiseWarningGIS.php>



Fishermen Warning Graphics

Day 1: 01.06.2025/11:30AM to 02.06.2025/05:30AM



Day 2: 02.06.2025/05:30AM to 03.06.2025/05:30AM



Day 3: 03.06.2025/05:30AM to 04.06.2025/05:30AM



Day 4: 04.06.2025/05:30AM to 05.06.2025/05:30AM



Day 5: 05.06.2025/05:30AM to 06.06.2025/05:30AM

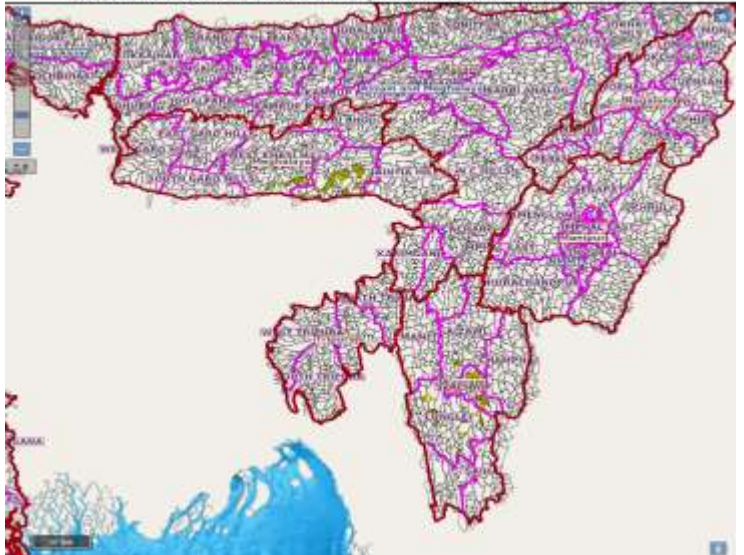
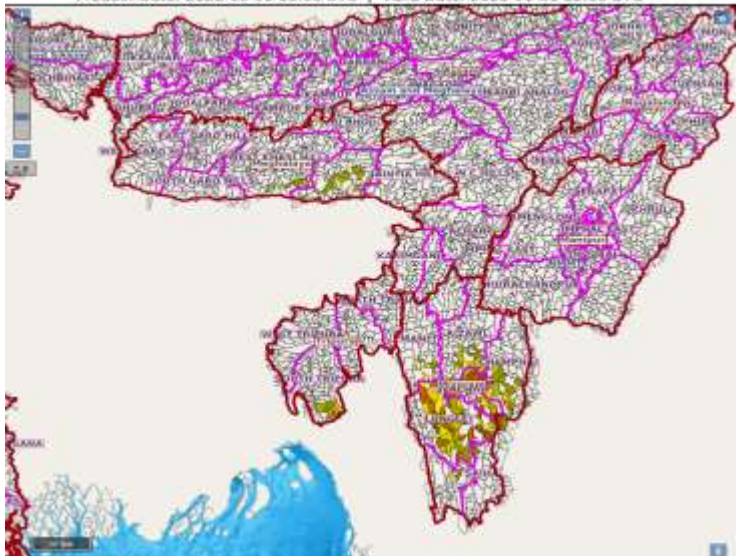
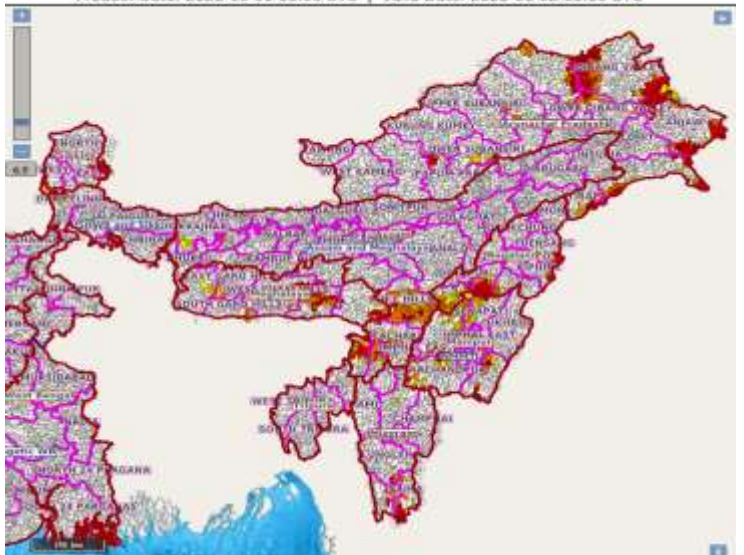


Squally Weather with wind speed 35-45 kmph gusting to 55 kmph

Squally wind with speed 45-55 kmph gusting to 65 kmph

Fishermen are advised not to venture into the marked areas.

Flash Flood Guidance

<p>Observed Flash Flood Threat (IFFT) till 1130 IST of 01-06-2025 :</p> <p>Moderate flash flood threat observed over few watersheds & neighbourhoods of following Met Sub-divisions during last 6 hours.</p> <p>Assam & Meghalaya - East Khasi Hills and West Khasi Hills districts. Nagaland Mizoram Manipur Tripura (NMMT) – Mizoram- Aizawl, Lunglei, Serchhip Tripura- South Tripura districts.</p>	<p>Product: IFFT Timescale: 06-hr Region: "INDIA" Product Date: 2025-06-01 06:00 UTC Valid Date: 2025-06-01 06:00 UTC</p> 
<p>Persistent Flash Flood Threat (PFFT) till 1730 IST of 01-06-2025 :</p> <p>Moderate flash flood threat likely over few watersheds & neighbourhoods of following Met Sub-divisions during next 6 hours.</p> <p>Assam & Meghalaya - East Khasi Hills and West Khasi Hills districts. Nagaland Mizoram Manipur Tripura (NMMT) – Mizoram- Aizawl, Champhai, Lawngtlai, Lunglei, Mamit Tripura- South Tripura districts.</p> <p>Surface runoff/ Inundation may occur at some fully saturated soils & low-lying areas over Area of Concern (AoC) as shown in map due to expected rainfall occurrence in next 6 hours.</p>	<p>Product: PFFT Timescale: 06-hr Region: "INDIA" Product Date: 2025-06-01 06:00 UTC Valid Date: 2025-06-01 12:00 UTC</p> 
<p>24 hours Outlook for the Flash Flood Risk (FFR) till 1130 IST of 02-06-2025 :</p> <p>Moderate flash flood risk likely over few watersheds & neighbourhoods of following Met Sub-divisions during next 24 hours.</p> <p>Arunachal Pradesh - Changlang, Dibang Valley, East Siang, Lohit, Lower Dibang Valley, Lower Subansiri, Tirap, West Siang, Anjaw, Upper Siang and Kurung Kumey districts. Assam & Meghalaya - Bongaigaon, Kokrajhar, N.C Hills, Karimganj, East Garo Hills, East Khasi Hills, South Garo Hills, West Garo Hills, West Khasi Hills and Jaintia Hills districts. Nagaland Mizoram Manipur Tripura (NMMT) – Manipur- Chandel, Churachandpur, Imphal East, Senapati, Tamenglong, Ukhrul, Mizoram- Aizawl, Lawngtlai, Lunglei, Saiha, Nagaland- Kiphire, Kohima, Mon, Peren and Tuensang districts. Sub-Himalayan West Bengal & Sikkim - East Sikkim, North Sikkim, South Sikkim, West Sikkim and Darjeeling districts.</p> <p>Surface runoff/ Inundation may occur at some fully saturated soils & low-lying areas over Area of Concern (AoC) as shown in map due to expected rainfall occurrence in next 24 hours.</p>	<p>Product: GFS FFR Timescale: 24-hr Region: "INDIA" Product Date: 2025-06-01 06:00 UTC Valid Date: 2025-06-02 06:00 UTC</p> 

Weather forecast over Delhi/NCR during 01st to 04th June 2025**Past Weather:**

There has been a rise in the minimum temperature upto 1°C and rise in the maximum temperature upto 5°C over Delhi/NCR during the past 24 hours. The maximum and minimum temperatures over Delhi were around 38 to 39°C and 24 to 27°C respectively. The minimum temperature was below normal up to 1 to 2°C and the maximum temperature was below normal up to 1 to 2°C. Partly cloudy sky conditions with predominant surface wind from the southwest direction with wind speeds up to 16 kmph gusting to 40 kmph prevailed during the past 24 hours. Partly cloudy sky conditions with wind speed less than 12 kmph from the southwest direction prevailed over the region in the forenoon today.

Weather Forecast:

01.06.2025: Partly cloudy sky. Very light to light rain accompanied by thunderstorm and gusty winds (speed 30 – 40 kmph) temporarily reaching 50 kmph during thunderstorm with dust rising winds towards evening/night. The maximum temperatures over Delhi are likely to be in the range of 37 to 39°C. The maximum temperature will be below normal up to 1 to 2°C. The predominant surface wind will likely be from the southwest direction with a wind speed of less than 15 kmph in the afternoon. The wind speed will gradually increase becoming 20-25 kmph from the southwest direction during evening and night.

02.06.2025: Partly cloudy sky. Very light to light rain accompanied by thunderstorm and gusty winds (speed 40 – 50 kmph) temporarily reaching 60 kmph during thunderstorm with dust rising winds. The maximum and minimum temperatures over Delhi are likely to be in the range of 36 to 38°C and 27 to 29°C respectively. The minimum temperature will be above normal up to 1 - 3°C and the maximum temperature will be below normal up to 2 to 4°C. The predominant surface wind will likely be from the southwest direction with a wind speed of less than 10 kmph during the morning hours. The wind speed will gradually increase becoming 20-25 kmph from the southwest direction in the afternoon. It will decrease becoming less than 15 kmph from the southwest direction during evening and night.

03.06.2025: Generally cloudy sky. Very light to light rain accompanied by thunderstorm and gusty winds (speed 40 – 50 kmph) temporarily reaching 60 kmph during thunderstorm with dust rising winds. The maximum and minimum temperatures over Delhi are likely to be in the range of 35 to 37°C and 26 to 28°C respectively. The minimum temperature will be above normal up to 1 - 2°C and the maximum temperature will be below normal up to 3 - 5°C. The predominant surface wind will likely be from the southwest direction with a wind speed of less than 15 kmph during the morning hours. The wind speed will gradually increase becoming less than 18 kmph from the southwest direction in the afternoon. It will decrease to less than 12 kmph from the northwest direction during the evening and night.

04.06.2025: Generally cloudy sky. Very light to light rain accompanied by thunderstorm and gusty winds (speed 40 – 50 kmph) temporarily reaching 60 kmph during thunderstorm with dust rising winds. The maximum and minimum temperatures over Delhi are likely to be in the range of 34 to 36°C and 24 to 26°C respectively. The minimum temperature will be below normal up to 1 - 2°C, and the maximum temperature will be below normal up to 4 - 6°C. The predominant surface wind will likely be from the west direction with a wind speed of less than 15 kmph during the morning hours. The wind speed will gradually increase becoming less than 20 kmph from the northwest direction in the afternoon. It will increase to less than 25 kmph from the northwest direction during the evening and night.

Impact expected and Action Suggested due to thunderstorm with lightning/gusty winds:

- Be cautious and take precautionary measures, though there is the likelihood of thunderstorm/lightning and gusty winds (speed 40 – 50 kmph) temporarily reaching 60 kmph during thunderstorm with dust rising surface winds.
- Breaking of tree branches, uprooting of large avenue trees, Large dead limbs blown from trees, Damage to standing crops, Minor to major damage to power and communication lines due to breaking of branches, Partial damage to vulnerable structures due to strong winds, Loose objects may fly.
- People are advised to keep a watch on the weather for worsening conditions and be ready to move to safer places accordingly, stay indoors, close windows & doors and avoid travel if possible, take safe shelters; do not take shelter under trees, do not lie on concrete floors and do not lean against concrete walls, unplug electrical/ electronic appliances, immediately get out of water bodies, keep away from all the objects that conduct electricity.

Impact & Action Suggested due to heavy to very heavy rainfall over Northeast India during next 3 days & Sub-Himalayan West Bengal & Sikkim during next 2 days (For Red & Orange colour warning areas)

Impact Expected

- ❖ Localized Flooding of roads, water logging in low lying areas of the above region.
- ❖ Occasional reduction in visibility due to heavy rainfall.
- ❖ Minor damage to kutch roads.
- ❖ Possibilities of damage to vulnerable structure.
- ❖ Localized Landslides/Mudslides
- ❖ Damage to horticulture and standing crops in some areas due to inundation.
- ❖ It may lead to riverine flooding in some river catchments (for riverine flooding please visit Web page of CWC).

Action Suggested

- ❖ Check for traffic congestion on your route before leaving for your destination.
- ❖ Follow any traffic advisories that are issued in this regard.
- ❖ Avoid going to areas that face the water logging problems often.
- ❖ Avoid staying in vulnerable structure.

Impact expected and action suggested due to isolated thunderstorm with lightning/gusty & Squally winds over

- ✓ **Thundersquall wind speed reaching 50-60 kmph gusting to 70 kmph** over likely over Jammu-Kashmir on 02nd & 03rd, Himachal Pradesh on 03rd & 04th, West Uttar Pradesh on 03rd, East Rajasthan on 02nd & 03rd June.

Impact expected:

- Minor to Major damage to banana and papaya trees.
- Strong wind/hail may damage plantation, horticulture and standing crops.
- Partial damage to vulnerable structures due to strong winds.
- Minor damage to kutch houses/walls and huts.
- Loose objects may fly.

Action suggested:

- People are advised to keep a watch on the weather for worsening conditions and be ready to move to safer places accordingly.
- Stay indoors, close windows & doors and avoid travel if possible.
- Take safe shelters; do not take shelter under trees.
- Do not lie on concrete floors and do not lean against concrete walls.
- Unplug electrical/ electronic appliances.
- Immediately get out of water bodies.
- Keep away from all the objects that conduct electricity.

Agromet advisories for likely impact of Heavy Rainfall / Hailstorms / Gusty Winds / Heat Wave

- Postpone rice transplanting in **Arunachal Pradesh**; sowing of *Sali* rice and vegetables in **Assam**; sowing of finger millet, maize, and black gram in **Manipur**; sowing of Jethi Dhan, maize, barnyard millet, and finger millet in **Uttarakhand**; and harvesting of rice in **Tripura**.
- Drain out excess water and ensure proper drainage in the rice nursery beds, fields of chilli, okra, other vegetables and soybean in **Arunachal Pradesh**; from rice, sesame, maize, sugarcane, ginger and turmeric in **Assam**; from bottle gourd and French bean in **Meghalaya**; from upland rice and maize in **Mizoram**; from pre *kharif* rice, soybean, finger millet, maize, black gram, vegetables and orchards in **Manipur**; from cabbage, maize and orchards in **Nagaland**; from unharvested rice fields, *Aus* rice nurseries and vegetables in **Tripura**; from Dalley Khorsani & tomato in **Sub Himalayan West Bengal**; from rice nurseries, pigeon pea and already sown maize, barnyard millets and finger millets; banana and coconut in **Kerala**; and from arecanut and banana in **Coastal Karnataka**.
- Shift the harvested produce in safer places or cover the produce with tarpaulin sheets in the fields. Tie the harvested crops properly and cover them to minimise the risk of displacement due to strong surface winds.
- Provide mechanical support and propping to horticultural crops and staking to vegetables to avoid lodging.

Livestock / Poultry / Fishery

- Keep the animals inside the shed during heavy rainfall and provide them balanced feed.
- Store feed and fodder in a safe place to prevent spoilage.
- Construct an outlet with proper netting around the ponds to drain out excess water, thereby preventing fish from escaping in case of overflow.

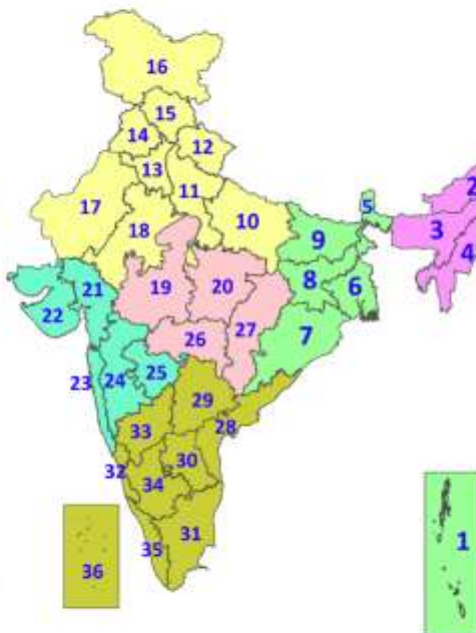
Legends & abbreviations:

- ❖ **Heavy Rain:** 64.5-115.5mm; **Very Heavy Rain:** 115.6-204.4mm; **Extremely Heavy Rain:** >204.4mm.
- ❖ **Obsy:** Observatory; **:** Automatic Weather Station; **ARG:** Automatic Rain Gauge; **dist:** District; **NH:** National Highway; **KVK:** Krishi Vigyan Kendra; **DVC:** Damodar Valley Corporation; **PTO:** Part Time Office, **Aero:** Aerodrome, **IAF:** Indian Air Force.
- ❖ **Region wise classification of meteorological Sub-Divisions:**
 - **Northwest India:** Western Himalayan Region (Jammu-Kashmir-Ladakh-Gilgit-Baltistan-Muzaffarabad, Himachal Pradesh and Uttarakhand); Punjab, Haryana-Chandigarh-Delhi; West Uttar Pradesh, East Uttar Pradesh, West Rajasthan and East Rajasthan.
 - **Central India:** West Madhya Pradesh, East Madhya Pradesh, Vidarbha and Chhattisgarh.
 - **East India:** Bihar, Jharkhand, Sub-Himalayan West Bengal & Sikkim; Gangetic West Bengal, Odisha and Andaman & Nicobar Islands.
 - **Northeast India:** Arunachal Pradesh, Assam & Meghalaya and Nagaland, Manipur, Mizoram & Tripura.
 - **West India:** Gujarat Region, Saurashtra & Kutch, Konkan & Goa, Madhya Maharashtra and Marathwada.
 - **South India:** Coastal Andhra Pradesh & Yanam, Telangana, Rayalaseema, Coastal Karnataka, North Interior Karnataka, South Interior Karnataka, Kerala & Mahe, Tamil Nadu, Puducherry & Karaikal and Lakshadweep.



LEGENDS

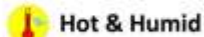
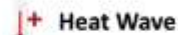
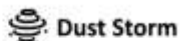
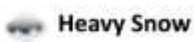
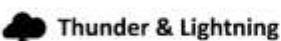
1. अंडमान और निकोबार द्वीपसमूह
2. अरुणाचल प्रदेश
3. असम और मेघालय
4. नागालैंड, मणिपुर, मिजोरम और त्रिपुरा
5. उप-हिमालयी पश्चिम बंगाल और सिक्किम
6. गंगीय पश्चिम बंगाल
7. ओडिशा
8. झारखंड
9. बिहार
10. पूर्वी उत्तर प्रदेश
11. पश्चिम उत्तर प्रदेश
12. उत्तराखंड
13. हरियाणा, चंडीगढ़ और दिल्ली
14. पंजाब
15. हिमाचल प्रदेश
16. जम्मू और कश्मीर और लद्दाख
17. पश्चिम राजस्थान
18. पूर्वी राजस्थान
19. पश्चिम मध्य प्रदेश
20. पूर्वी मध्य प्रदेश
21. गुजरात
22. सौराष्ट्र
23. कोंकण और गोवा
24. मध्य महाराष्ट्र
25. मराठवाड़ा
26. विदर्भ
27. छत्तीसगढ़
28. तटीय आंध्र प्रदेश और यनम
29. तेलंगाना
30. रायलसीमा
31. तमिलनाडु, पुडुचेरी और कराईकल
32. तटीय कर्नाटक
33. आंतरिक उत्तरी कर्नाटक
34. आंतरिक दक्षिणी कर्नाटक
35. केरल और माहे
36. लक्षद्वीप



1. Andaman & Nicobar Islands
2. Arunachal Pradesh
3. Assam & Meghalaya
4. Nagaland, Manipur, Mizoram & Tripura
5. Sub-Himalayan West Bengal & Sikkim
6. Gangetic West Bengal
7. Odisha
8. Jharkhand
9. Bihar
10. East Uttar Pradesh
11. West Uttar Pradesh
12. Uttarakhand
13. Haryana, Chandigarh & Delhi
14. Punjab
15. Himachal Pradesh
16. Jammu & Kashmir and Ladakh
17. West Rajasthan
18. East Rajasthan
19. West Madhya Pradesh
20. East Madhya Pradesh
21. Gujarat
22. Saurashtra
23. Konkan & Goa
24. Madhya Maharashtra
25. Marathwada
26. Vidarbha
27. Chhattisgarh
28. Coastal Andhra Pradesh & Yanam
29. Telangana
30. Rayalaseema
31. Tamilnadu, Puducherry & Karaikal
32. Coastal Karnataka
33. North Interior Karnataka
34. South Interior Karnataka
35. Kerala & Mahe
36. Lakshadweep

SPATIAL DISTRIBUTION (% of Stations reporting)

% Stations	Category	% Stations	Category
76-100	Widespread (WS/Most Places)	26-50	Scattered (SCT/A Few Places)
51-75	Fairly Widespread (FWS/Many Places)	1-25	Isolated (ISOL)



COLOUR CODED WARNING

No Warning (No Action)
Watch (Be Aware)
Alert (Be Prepared To Take Action)
Warning (Take Action)

Probabilistic Forecast

Terms	Probability of Occurrence (%)
Unlikely	< 25
Likely	25 - 50
Very Likely	50 - 75
Most Likely	> 75

* Red colour warning does not mean "Red Alert", Red colour warning means "Take Action".

Forecast and Warning for any day is valid from 0830 hours IST of day till 0830 hours IST of next day.

For more details, kindly visit <https://mausam.imd.gov.in> or contact: 011-2434-4599

(Service to the Nation since 1875)

DEFINITION/CRITERIA

Rain/ Snow *

Heavy: 64.5 to 115.5 mm/cm *
Very Heavy: 115.6 to 204.4 mm/cm *
Extremely Heavy: > 204.4 mm/cm *

Heat Wave

When maximum temperature of a station reaches $\geq 40^{\circ}\text{C}$ for plains and $\geq 30^{\circ}\text{C}$ for hilly regions

(a) Based on Departure from normal

Heat Wave: Maximum Temperature Departure from normal 4.5°C to 6.4°C .

Severe Heat Wave: Maximum Temperature Departure from normal $\geq 6.5^{\circ}\text{C}$

(b). Based on Actual maximum temperature

Heat Wave: When actual maximum temperature $\geq 45^{\circ}\text{C}$.

Severe Heat Wave: When actual maximum temperature $\geq 47^{\circ}\text{C}$.

(c). Criteria for heat wave for coastal stations

When maximum temperature departure is $> 4.5^{\circ}\text{C}$ from normal. Heat Wave may be described provided maximum temperature $\geq 37^{\circ}\text{C}$.

Warm Night

When maximum temperature remains 40°C

Warm Night: When minimum temperature departure 4.5°C to 6.4°C .

Severe Warm Night: When minimum temperature departure $> 6.4^{\circ}\text{C}$.

Cold Wave

When minimum temperature of a station $\leq 10^{\circ}\text{C}$ for plains and $\leq 0^{\circ}\text{C}$ for hilly regions.

(a). Based on departure

Cold Wave: Minimum Temperature Departure from normal -4.5°C to -6.4°C .

Severe Cold Wave: Minimum Temperature Departure from normal $\leq -6.5^{\circ}\text{C}$

(b) Based on actual Minimum Temperature (for Plains only)

Cold Wave: When Minimum Temperature is $\leq 4.0^{\circ}\text{C}$

Severe Cold Wave: When Minimum Temperature is $\leq 2.0^{\circ}\text{C}$

(c) For Coastal Stations

When Minimum Temperature departure is $\leq -4.5^{\circ}\text{C}$ & actual Minimum Temperature is $\leq 15^{\circ}\text{C}$

Cold Day

When minimum temperature of a station $\leq 10^{\circ}\text{C}$ for plains and $\leq 0^{\circ}\text{C}$ for hilly regions

Based on departure

Cold Day: Maximum Temperature Departure from normal -4.5°C to -6.4°C .

Severe Cold Day: Maximum Temperature Departure from normal $\leq -6.5^{\circ}\text{C}$

Fog

Phenomenon of small droplets suspended in air and the horizontal visibility $< 1\text{km}$

Moderate Fog: When the visibility between 500-200 metres

Dense Fog: when the visibility between 50- 200 metres

Very Dense Fog: when the visibility < 50 metres

Thunderstorm

Sudden electrical discharges manifested by a flash of light (Lightning) and a sharp rumbling sound (thunder)

Dust/Sand Storm

An ensemble of particles of dust or sand energetically lifted to great heights by a strong and turbulent wind.

Frost

Ice deposits on ground

Air temperature $\leq 4^{\circ}\text{C}$ (over Plains)

Squall

A strong wind that rises suddenly, lasts for atleast 1 minute.

Moderate: Wind speed 52-61 kmph

Severe: Wind speed 62-87 kmph

Very Severe: Wind speed > 87 kmph

Sea State

Effect of various waves in the sea over specific area

Rough to very rough: Wind speed 41-62 kmph (22-33 knots) & Wave height 2.5-6 metre

High to very high: Wind speed 63-117 kmph (34-63 knots) & Wave height 6-14 metre

Phenomenal: Wind speed > 117 kmph (> 63 knots) & Wave height > 14 metre

Cyclone

Cyclonic Storm: Wind speed 62-87 kmph (34-47 knots)

Severe Cyclonic Storm: Wind speed 88-117 kmph (48-63 knots)

Very Severe Cyclonic Storm: Wind speed 118-165 kmph (64 - 89 knots)

Extremely Severe Cyclonic Storm: Wind speed 166-220 kmph (90 -119 knots)

Super Cyclone Storm: Wind speed > 220 kmph (> 119 knots)

* Red colour warning does not mean "Red Alert", Red colour warning means "Take Action".

Forecast and Warning for any day is valid from 0830 hours IST of day till 0830 hours IST of next day.

For more details, kindly visit <https://mausam.imd.gov.in> or contact: 011-2434-4599

(Service to the Nation since 1875)

Hot and Humid: When maximum temperatures remain 3°C above normal along with the above normal relative humidity.